

	B016 Fisheye	B036 Ultra Wide Lens	B041 Super Wide Lens	B061 Wide Lens	B079 Standard Lens	B119 Tele Lens	B237 Distant Tele	B500 Super Tele Lens	B045-100-CS CS Vario
Image angle (horizontal)									
Focal length	1.6 mm	3.6 mm	4.1 mm	6.1 mm	7.9 mm	11.9 mm	23.7 mm	50 mm	4.5 - 10 mm
35 mm equivalent	10 mm	20 mm	22 mm	32 mm	43 mm	65 mm	135 mm	270 mm	24 - 54 mm
Aperture f/	2.0	1.8	1.8	1.8	1.8	1.8	1.8	2.5	1.6 - 2.3
Image angle (horiz. x vertical)	180° x 180°	103° x 77°	90° x 67°	60° x 45°	45° x 34°	31° x 23°	15° x 11°	8° x 6°	39°-89° x 29°-65°
Image width/height (dist. 1 m)		2.5 / 1.6 m	2.0 / 1.3 m	1.2 / 0.8 m	0.8 / 0.6 m	0.6 / 0.4 m	0.3 / 0.2 m	0.1 / 0.1 m	
Image width/height (dist. 10 m)		25.1 / 15.9 m	20.0 / 13.2 m	11.5 / 8.3 m	8.3 / 6.1 m	5.5 / 4.1 m	2.6 / 1.9 m	1.4 / 1.0 m	
Image width/height (dist. 50 m)		125.7 / 79.5 m	100.0 / 66.2 m	57.7 / 41.4 m	41.4 / 30.6 m	27.7 / 20.3 m	13.2 / 9.6 m	7.0 / 5.2 m	

Maximum distances in meters @ 5MP (2592 x 1944 Pixel)									
Monitor (1 px $\hat{=}$ 80 mm)	13.7 m	115.3 m	132.0 m	208.0 m	290.2 m	441.0 m	888.8 m	1,781.0 m	
Detect (1 px $\hat{=}$ 40 mm)	6.9 m	57.6 m	66.0 m	104.0 m	145.1 m	220.5 m	444.4 m	890.5 m	
Observe (1 px $\hat{=}$ 16 mm)	2.7 m	23.1 m	26.4 m	41.6 m	58.0 m	88.2 m	177.8 m	356.2 m	
Recognize (1 px $\hat{=}$ 8 mm)	1.4 m	11.5 m	13.2 m	20.8 m	29.0 m	44.1 m	88.9 m	178.1 m	
Identify (1 px $\hat{=}$ 4 mm)	0.7 m	5.8 m	6.6 m	10.4 m	14.5 m	22.0 m	44.4 m	89.0 m	
Inspect (1 px $\hat{=}$ 1 mm)	0.2 m	1.4 m	1.6 m	2.6 m	3.6 m	5.5 m	11.1 m	22.3 m	

As specified in the DIN EN 50132-7 standard, there are six different levels of quality for video surveillance. "Inspect" is the level with the highest demands on image quality, whereas "Monitor" is the one with the lowest. These can be used to determine the maximum distance between camera and surveillance area, the required minimum resolution, and the most suitable camera lens for optimal coverage of the surveillance area.

		B016 Day	B016 Night	B036 Day	B036 Night	B041 Day	B041 Night	B061 Day	B061 Night	B079 Day	B079 Night	B119 Day	B119 Night	B237 Day	B237 Night	B500 Day	B500 Night	Vario Day	Vario Night
Indoor Single Lens																			
	i25	●	⊕	●	⊕	-	-	-	-	-	-	-	-	-	-	-	-	-	-
	i25 Audio	●	⊕	⊕	⊕	-	-	-	-	-	-	-	-	-	-	-	-	-	-
	c25	●	●	●	⊕	-	-	-	-	-	-	-	-	-	-	-	-	-	-
	c25 Audio	●	⊕	⊕	⊕	-	-	-	-	-	-	-	-	-	-	-	-	-	-
	p25	●	⊕	●	⊕	-	-	⊕	-	⊕	-	⊕	-	⊕	-	-	-	-	-
	p25 Audio	●	⊕	⊕	⊕	-	-	-	-	-	-	-	-	-	-	-	-	-	-
	p25 Body	-	-	●	●	●	●	●	●	●	●	●	●	●	●	●	●	-	-
	p25 Body N	-	-	●	●	●	●	●	●	●	●	●	●	●	●	●	●	-	-
	p25 Body Audio	-	-	●	●	●	●	●	●	●	●	●	●	●	●	●	●	-	-
	p25 Body N Aud.	-	-	●	●	●	●	●	●	●	●	●	●	●	●	●	●	-	-
	v25	-	-	●	-	-	-	-	-	-	-	-	-	-	-	-	-	-	-
	v25 Body	-	-	●	●	●	●	●	●	●	●	●	●	●	●	●	●	-	-
	v25 Body N	-	-	●	●	●	●	●	●	●	●	●	●	●	●	●	●	-	-
	v25 Body Black	-	-	●	●	●	●	●	●	●	●	●	●	●	●	●	●	-	-
	v25 Body N Black	-	-	●	●	●	●	●	●	●	●	●	●	●	●	●	●	-	-

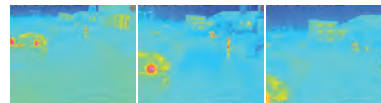
Outdoor Single Lens																			
	D25	-	-	⊕	⊕	⊕	⊕	⊕	⊕	⊕	⊕	⊕	⊕	⊕	⊕	⊕	⊕	-	-
	D25 Body	-	-	●	●	●	●	●	●	●	●	●	●	●	●	●	●	●	-
	M25	●	⊕	⊕	⊕	⊕	⊕	⊕	⊕	⊕	⊕	⊕	⊕	⊕	⊕	⊕	⊕	-	-
	M25 Body	-	-	●	●	●	●	●	●	●	●	●	●	●	●	●	●	●	-
	Q25	●	●	-	-	-	-	-	-	-	-	-	-	-	-	-	-	-	-
	Q25 Black	⊕	⊕	-	-	-	-	-	-	-	-	-	-	-	-	-	-	-	-
	S15M	●	●	-	-	-	-	-	-	-	-	-	-	-	-	-	-	-	-
	T25 White	●	●	-	-	-	-	-	-	-	-	-	-	-	-	-	-	-	-
	T25 Silver (s)	●	●	-	-	-	-	-	-	-	-	-	-	-	-	-	-	-	-
	T25 Black (b)	●	●	-	-	-	-	-	-	-	-	-	-	-	-	-	-	-	-

Explanation:
 ● Standard Program: Available lens/sensor configuration
 ⊕ Supplement Program: Lens/sensor configuration only based on order and price adder
 ● Available standard lenses/sensor modules/camera bodies for self assembly, to be ordered separately
 - Lens or sensor combination not available

Outdoor Single Lens																	
	T25 Set 1, 2, 3	●	-	-	-	-	-	-	-	-	-	-	-	-	-	-	-
	T25 Set 1, 2, 3 (s)	●	-	-	-	-	-	-	-	-	-	-	-	-	-	-	-
	T25 Set 1, 2, 3 (b)	●	-	-	-	-	-	-	-	-	-	-	-	-	-	-	-
	V15M	-	-	-	-	⊕	-	-	⊕	-	-	-	-	-	-	-	-

B016 Day	B016 Night	B036 Day	B036 Night	B041 Day	B041 Night	B061 Day	B061 Night	B079 Day	B079 Night	B119 Day	B119 Night	B237 Day	B237 Night	B500 Day	B500 Night	Vario Day	Vario Night
----------	------------	----------	------------	----------	------------	----------	------------	----------	------------	----------	------------	----------	------------	----------	------------	-----------	-------------

Outdoor Dual Lens																	
Lens unit incl. sensor. D15 Fix, Pano and Pano Night models requires body and lens orders separately and self assembly																	
	D15 Fix	--	⊕	⊕	⊕	⊕	⊕	⊕	⊕	⊕	⊕	⊕	⊕	⊕	⊕	Two parallel aligned sensors	
	D15 Pano	--	--	--	⊕*	--	* Pano = For a 180° Dual Panorama Image there are 2 lens units required: B041 (Day/Day or Night/Night combination)										
	D15 Pano N	--	--	--	--	⊕*											
	D15 Day/Night	--	⊕ & ⊕	⊕ & ⊕	⊕ & ⊕	⊕ & ⊕	⊕ & ⊕	⊕ & ⊕	⊕ & ⊕	⊕ & ⊕	⊕ & ⊕	⊕ & ⊕	⊕ & ⊕	--	--	--	--
	D15 Body	--	●	●	●	●	●	●	●	●	●	●	●	●	●	--	--
	M15	--	⊕ & ⊕	● & ●	⊕ & ⊕	● & ●	⊕ & ⊕	● & ●	⊕ & ⊕	⊕ & ⊕	⊕ & ⊕	⊕ & ⊕	⊕ & ⊕	--	--	--	--
	M15 Body	●	●	●	●	●	●	●	●	●	●	●	●	●	●	●	●
	S15 Set 1	●	-	-	-	-	-	-	-	-	-	-	-	-	-	-	-
	S15 Set 2	● & ●	-	-	-	-	-	-	-	-	-	-	-	-	-	-	-
	S15 Set 3	● & ●	-	-	-	-	-	-	-	-	-	-	-	-	-	-	-
	S15 Body	●	●	●	●	●	●	●	●	●	●	●	●	●	●	●	●
	V15	-	-	-	⊕	⊕	-	-	⊕	⊕	-	-	-	-	-	-	-
	V15	-	-	-	⊕	⊕	-	-	⊕	⊕	-	-	-	-	-	-	-



Thermal		L43	L65	L135
Thermal TR		B079	B119	B237
Image Angle (horizontal)				
	M15 Thermal	An additional optical sensor module can be combined (see above M15 Body)		
	M15 Thermal TR	⊕	⊕	⊕
	S15 Thermal	The second sensor input can be equipped with a thermal or optical sensor module (see S15 Body) or as S15 PTMount Thermal/PTMount		
	S15 Thermal TR	⊕	⊕	⊕
	PTMount Thermal	⊕	⊕	⊕
	PTMount TR	⊕	⊕	⊕

PLEASE NOTE – Special Export Regulations For Thermographic Cameras

Cameras with thermographic image sensors ('thermographic cameras') are subject to special U.S. and ITAR (International Traffic in Arms Regulation) export regulations:

- According to the currently valid export regulations of the U.S. and ITAR, cameras with thermographic image sensors or their component parts cannot be exported to countries that have been embargoed by the U.S./ITAR. This currently applies to Syria, Iran, Cuba, North Korea and Sudan, in particular. The equivalent delivery ban also applies to all individuals and institutions included in 'The Denied Persons List' (see www.bis.doc.gov, under Policy Guidance > Lists of Parties of Concern).
- These cameras and their installed thermographic image sensors are not to be used for the design, development, or production of nuclear, biological or chemical weapons or installed in these systems.

Explanation:

- Standard Program: Available lens/sensor configuration
- ⊕ Supplement Program: Lens/sensor configuration only based on order and price adder
- Available standard lenses/sensor modules/camera bodies for self assembly, to be ordered separately
- Lens or sensor combination **not** available