

# Series 24 Building Entrance Terminals

## Quality

Over 34 years of protection design innovation and market performance along with numerous related patents attest to Porta Systems BETs and Protectors quality and reliability.

The Porta Systems family of Building Entrance Terminals and Protectors meet the same production standards demanded by telephone service providers. In fact, the protection supplied with Porta's customer premises line of BETs is the same utilized in telcos throughout the country.

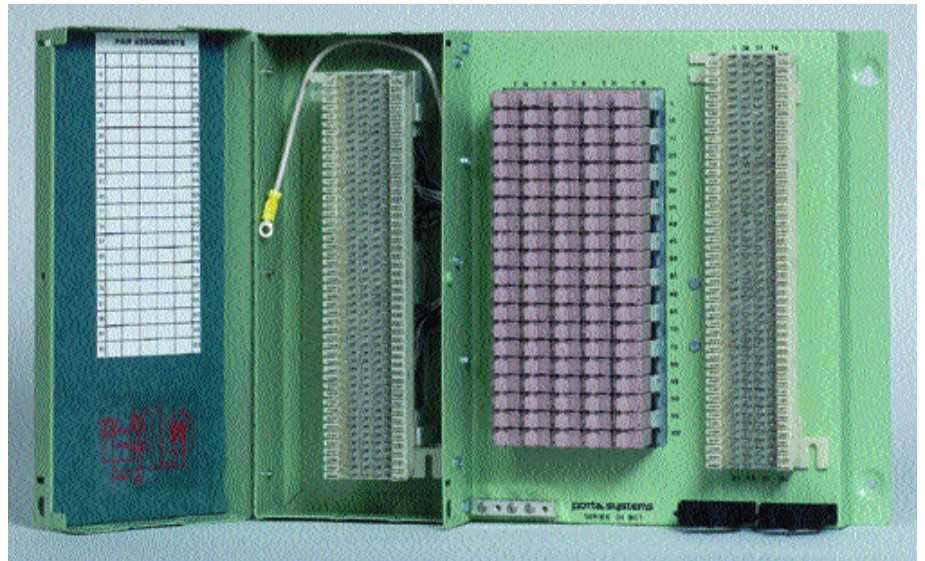
These standards are maintained through a rigorous process of production quality control checks and the use of the best materials available. Our broad line of BETs and protectors are manufactured to the highest industry standards:

- ISO 9001 Registered Facility
- AQL Incoming Inspection Process
- UL Listed 497 for Primary and Secondary Protection
- 100% Traceability (each product is serialized, date coded, and recorded for accountability)

*Sophisticated equipment  
demands sophisticated  
protection*



Available Fully Equipped and Factory Tested with the Industry's Widest Selection of Protectors— Assuring Reliability and Greatly Reducing Installation Time and Related Costs



## Features & Benefits

- UL 497 Listed for primary and secondary protection
- Five or single pin protector configuration
- 66, 110, 710, as well as factory stubbed
- Available in 25, 50, and 100 pair counts
- Over 70 different BET Models designed to meet any given spec
- Over 100 Protector Modules (7.5V-400V)— for every application
- Module installation factory tested
- Total flexibility, stackable, universal application
- Large splice chamber
- Optional protector panel cover
- Connection cover: small swing radius-more room in tight quarters
- Manufacturing facility certified to ISO 9001
- Low Capacitance DSL Compatible (certain models)
- Compact, lightweight 18 gauge welded steel housing

## Series 24 Building Entrance Terminals

### SPECIFICATIONS:

Dimensions (height x width x depth):

	25 PAIR	8" x 14.5" x 3"	(20.3 cm x 36.8 cm x 7.6 cm)
	50 PAIR	8" x 14.5" x 3"	(20.3 cm x 36.8 cm x 7.6 cm)
	100 PAIR	12" x 16.5" x 3"	(30.5 cm x 41.9 cm x 7.6 cm)
Average weight:	25 PAIR	97 oz.	(2.75 kg)
	50 PAIR	133 oz.	(3.77 kg)
	100 PAIR	176 oz.	(4.99 kg)

Operating Temperature: - 13°F to 149°F (- 25°C to + 65°C)

Construction: 18 gauge steel, epoxy powder coated. Federal Standard 595, color #24417

Contacts: single pin —spring tempered phosphor base metal  
five pin —tin/lead alloy plated contact over spring tempered phosphor base metal

### ORDERING INFORMATION:

#### MODEL NUMBERS

TERMINATION	100 PAIR	50 PAIR	25 PAIR
66/66	24100-66-F66P*	24050-66-F66P*	24025-66-F66P*
66/66	24100-66-F66	24050-66-F66	24025-66-F66
110/110	24100-110-F110P*	24050-110-F110P*	24025-110-F110P*
110/110	24100-66-F110	24050-66-F110	24025-110-F110
710/66	24100-710-F66	24050-710-F66	24025-710-F66
710/110	24100-710-F110	24050-66-F110	24025-110-F110
Stub**	24100-ST-F66	24050-ST-F66	24025-ST-F66
Stub**	24100-ST-F110	24050-ST-F110	24025-ST-F110

\* NOTE: The suffix -P indicates a Series 24 BET fully equipped with factory installed and tested 230V-240V protection.

\*\*Standard stub length is 15ft. Alternate cable lengths available upon request.

Option: Equipment side cover.

### PROTECTOR MODULES ORDERING INFORMATION:

Porta Systems offers the broadest selection of protectors in the industry. The table below describes modules most suitable to BETs applications. They represent a small portion of what is available. Please contact Porta Systems or your local rep for a complete list of modules and applications.

MODULE MODEL NUMBER	TYPE	VOLTAGE	GENERIC	APPLICATION
95 BCDXN 230	DELTA	230V		PBXs; Key Systems >10 nanoseconds
95 BCDXN 75	DELTA	75		Digital Data Circuits
75 BCXN 230	GAS TUBE	75V		General Purpose
95 BCXN 230	GAS TUBE	230		Modems, Printers, etc
15 SCN-230/240	SOLID STATE	230V		Latest Tech. Clamping <5 nanoseconds
15 SCN-75	SOLID STATE	75		Latest Tech. Clamping <5 nanoseconds
LVP 27	SOLID STATE	27		Data Only, <5 nanoseconds

**MODULES ARE AVAILABLE IN SINGLE OR FIVE PIN CONFIGURATIONS RANGING FROM 7.5V TO 230V AND FIT ALL BET MODELS.**

FEATURES AND SPECIFICATIONS SUBJECT TO CHANGE WITHOUT NOTICE

©2001 PORTA SYSTEMSCORP



For more information contact:  
575 Underhill Blvd., Syosset, NY 11791  
Phone: 1-800-93 PORTA (800-364-9300) FX: 516-364-4636  
[www.portasystems.com](http://www.portasystems.com)