



WilsonPro Boosters

75 Ohm In-Building Cell Signal Boosters with Integrated Uplink & Downlink Power Meter

MADE IN THE USA 

The Industry's Most Powerful Line of In-Building Signal Boosters.

Wilson boosters amplify weak cellular signals to provide reliable voice and data coverage – for all carriers – inside homes and other buildings where signals may not penetrate. The Pro 70 Plus from Wilson Electronics has the highest downlink power, compared to its closest competitor, and features a self-optimizing microprocessor with a built-in graphical signal meter. The uplink and downlink power display makes it easy for the integrator to determine the direction of the cell tower and the strength of the available signal, which greatly reduce installation time.

Like all Wilson boosters, the Pro 70 and 70 Plus feature cell site protections that prevent any possibility of interference. The Pro 70 Plus, and all Pro models from Wilson Electronics, are not available through any online or retail source. Wilson Electronics quality and an industry-leading three year warranty make all WilsonPro boosters the clear choice for the professional technology integrator.

FEATURES

- Best in class coverage area
- Expansion kits available for large scale installations
- Self-optimizing design minimizes install time
- Compatible with all North American cellular networks
- Graphical uplink & downlink power meter*
- Three-year warranty
- FCC and Industry Canada certified

BENEFITS FOR USERS

- Fewer dropped calls and lost connections
- Faster, cleaner data transfers
- Strong, reliable connections even in weak signal areas
- Enhanced indoor coverage area*
- Extends battery life of cellular devices

* Features for Pro 70 Plus Only

INCLUDED IN THE KIT

- (1) 314475 - Wide band antenna
- (1) 311155 - Wide band panel antenna
- (1) 951127 - 2ft RG11 low-loss cable
- (1) 951150 - 50ft RG11 low-loss cable
- (1) 951175 - 75ft RG11 low-loss cable
- (1) 859992 - Lightning surge protector

	Pro 70 - 463134	Pro 70 Plus - 460127
Frequency	698-746 MHz	746-787 MHz
		824-894 MHz
		1850-1995 MHz
		1710-1755/2110-2155 MHz
Max Gain	70dB	70dB
Power Requirements	110-240 V AC, 50-60 Hz, 20 W	
Connectors	75 Ohm F-female	
Dimensions	8.875 x 6.0 x 1.5 in or 22.5 x 15.2 x 3.8 cm	
Weight	2.81 lbs or 1.27 kg	
Integrated Power Meter	No	Yes
Enhanced Indoor Coverage	No	Yes

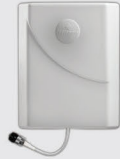


 **WILSONPRO**

www.wilsonpro.com

WILSONPRO SIGNAL BOOSTER ACCESSORIES

311155



**Wilson Electronics -
Indoor Panel Antenna**

Built-in ground plane, mounting hardware included, for fixed installations

314475



**Wilson Electronics -
Outdoor Directional Antenna**

Durable, high-gain, wide band directional antenna

859992



**Wilson Electronics -
Lightning Surge Protector**

75 Ohm Lightning Surge Protector

859993



**Wilson Electronics -
-3 dB 2 Way Splitter**

700-2500 MHz, 75 Ohm, F Female

859994



**Wilson Electronics -
-4.8 dB 3 Way Splitter**

700-2500 MHz, 75 Ohm, F Female

859106



**Wilson Electronics -
-6 dB 4 Way Splitter**

75 ohm, F-Female
700-2500 MHz

859976



**Wilson Electronics -
-10 dB tap**

700-2500 MHz, 75 Ohm, F Female

971150



**Wilson Electronics -
RG-11 Compression Connector**
F-Type

971151



**Wilson Electronics -
Adapter**
F-Male to N-Female Adapter

460118



**Wilson Electronics -
Cellular Signal Strength Meter**

Wilson Signal Detector w/ Omni Rubber Duck Antenna Power Supply

901117



**Wilson Electronics -
Antenna Pole Mount Kit**

