

# CAT5e PATCH CABLES



## Cat5e Patch Cables

Quiktron's Q-Series Cat5E Patch Cables (which are made in the USA and can be customized to your specific requirements) are the perfect solution for distributing data, voice and video. Our patch cables are constructed with high-quality wire and a shortened body plug to keep Near-End Crosstalk (NEXT) levels to a minimum while providing the necessary bandwidth to support mission-critical applications.

### Features:

- Meets or exceeds industry standards for NEXT and return loss
- Available in booted and non-booted configurations and in a wide variety of colors
- Made with 24AWG, stranded copper (7x32), four twisted pairs
- Q-Series patch cords are made in the USA
- Available in custom lengths and colors and can ship in as little as two business days
- Value Series patch cables available for same day shipping
- All Quiktron cables feature a lifetime warranty

If the project calls for a specific manufacturer, Quiktron offers the flexibility to make solutions utilizing virtually any manufacturer's cable specified.

## Wiring Schematics – 568A vs 568B

### 568A

Pair	Wire	Pin
1	White/Blue	5
	Blue	4
2	White/Orange	3
	Orange	6
3	White/Green	1
	Green	2
4	White/Brown	7
	Brown	8



### 568B

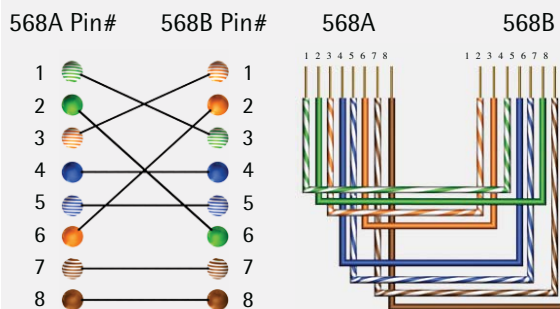
Pair	Wire	Pin
1	White/Blue	5
	Blue	4
2	White/Orange	1
	Orange	2
3	White/Green	3
	Green	6
4	White/Brown	7
	Brown	8



EIA/TIA 568A and 568B specifies the pin designation for Category 5 cabling. While the original specification was known as 568A, it later became known as a wiring scheme along with 568B. The only difference between the two configurations is the placement of the second (white/orange, orange) and third pairs (white/green, green).

Either of the above mentioned wiring schemes may be used during installation. Although 568B is more common, there is no difference in performance. What is critical, however, is that the same wiring scheme is used throughout the network. If 568B is used at the wall plate, then it must also be used at the patch panel. Failure to do so will cause the network switch to not communicate properly. Although there are four pairs, only two (white/orange, orange; white/green, green) are used to transmit and receive.

## Crossover Cables – 568A to 568B



A crossover cable is simply a Cat5, Cat5e, or Cat6 network cable that is pinned 568A on one end and 568B on the other. While the unused pins 4, 5, 7, 8 are pinned identical, pins 1, 2, 3, and 6 are "crossed over" to 3, 6, 1, and 2, respectively. Crossover cables are used in situations where two devices have the same interface, particularly computer to computer. A crossover cable or port is often times used when patching a hub or a switch into a wall plate.

# CAT5e PATCH CABLES

FIBER

COPPER

RAPIDRUN

AUDIO/VIDEO

PC/COMPUTER



## Q-Series Cat5e Patch Cables

	Black	Blue	Gray	Green	Orange	Purple	Red	White	Yellow
Non-Booted	550-135-LLL	550-110-LLL	550-100-LLL	550-120-LLL	550-140-LLL	550-145-LLL	550-130-LLL	550-125-LLL	550-115-LLL
Booted	551-135-LLL	551-110-LLL	551-100-LLL	551-120-LLL	551-140-LLL	551-145-LLL	551-130-LLL	551-125-LLL	551-115-LLL
Slimline Boots*	551-135-LLL-SLB	551-110-LLL-SLB	551-100-LLL-SLB	551-120-LLL-SLB	551-140-LLL-SLB	551-145-LLL-SLB	551-130-LLL-SLB	551-125-LLL-SLB	551-115-LLL-SLB
Crossover	553-135-LLL	553-110-LLL	553-100-LLL	553-120-LLL	553-140-LLL	553-145-LLL	553-130-LLL	553-125-LLL	553-115-LLL
Gigabit Crossover	555-135-LLL	555-110-LLL	555-100-LLL	555-120-LLL	555-140-LLL	555-145-LLL	555-130-LLL	555-125-LLL	555-115-LLL
Shielded	530-135-LLL	530-110-LLL	530-100-LLL	530-120-LLL	530-140-LLL	530-145-LLL	530-130-LLL	530-125-LLL	530-115-LLL
BerkTek LM 350	550-835-LLL	558-810-LLL	558-800-LLL	558-820-LLL	558-840-LLL	558-845-LLL	558-830-LLL	558-825-LLL	558-815-LLL
Solid Wire	520-135-LLL	520-110-LLL	520-100-LLL	520-120-LLL	520-140-LLL	520-145-LLL	520-130-LLL	520-125-LLL	520-115-LLL
Plenum-Rated Solid Wire	597-135-LLL	597-110-LLL	597-100-LLL	597-120-LLL	597-140-LLL	597-145-LLL	597-130-LLL	597-125-LLL	597-115-LLL

LLL – Length can be customized to meet your specifications.

\*Slimline Boots available on all Q Series. Pink (150), Lime Green (165), and Brown (160) also available.

## Value Series Cat5e Patch Cables – Booted

	Black	Blue	Gray	Green	Orange	Purple	Red	White	Yellow
1ft	570-135-001	570-110-001	570-100-001	570-120-001	570-140-001	570-145-001	570-130-001	570-125-001	570-115-001
2ft	570-135-002	570-110-002	570-100-002	570-120-002	570-140-002	570-145-002	570-130-002	570-125-002	570-115-002
3ft	570-135-003	570-110-003	570-100-003	570-120-003	570-140-003	570-145-003	570-130-003	570-125-003	570-115-003
5ft	570-135-005	570-110-005	570-100-005	570-120-005	570-140-005	570-145-005	570-130-005	570-125-005	570-115-005
7ft	570-135-007	570-110-007	570-100-007	570-120-007	570-140-007	570-145-007	570-130-007	570-125-007	570-115-007
10ft	570-135-010	570-110-010	570-100-010	570-120-010	570-140-010	570-145-010	570-130-010	570-125-010	570-115-010
14ft	570-135-014	570-110-014	570-100-014	570-120-014	570-140-014	570-145-014	570-130-014	570-125-014	570-115-014
25ft	570-135-025	570-110-025	570-100-025	570-120-025	570-140-025	570-145-025	570-130-025	570-125-025	570-115-025
50ft	570-135-050	570-110-050	570-100-050	570-120-050	570-140-050	570-145-050	570-130-050	570-125-050	570-115-050
100ft	570-135-100	570-110-100	570-100-100	570-120-100	570-140-100	570-145-100	570-130-100	570-125-100	570-115-100

Other lengths are available - please contact your Quiktron representative for complete lengths and availability.

## Value Series Cat5e Patch Cables – Non-Booted

	Black	Blue	Gray	Green	Orange	Purple	Red	White	Yellow
1ft	560-135-001	560-110-001	560-100-001	560-120-001	560-140-001	560-145-001	560-130-001	560-125-001	560-115-001
2ft	560-135-002	560-110-002	560-100-002	560-120-002	–	–	560-130-002	560-125-002	560-115-002
3ft	560-135-003	560-110-003	560-100-003	560-120-003	560-140-003	560-145-003	560-130-003	560-125-003	560-115-003
5ft	560-135-005	560-110-005	560-100-005	560-120-005	560-140-005	560-145-005	560-130-005	560-125-005	560-115-005
7ft	560-135-007	560-110-007	560-100-007	560-120-007	560-140-007	560-145-007	560-130-007	560-125-007	560-115-007
10ft	560-135-010	560-110-010	560-100-010	560-120-010	560-140-010	560-145-010	560-130-010	560-125-010	560-115-010
14ft	560-135-014	560-110-014	560-100-014	560-120-014	560-140-014	560-145-014	560-130-014	560-125-014	560-115-014
25ft	560-135-025	560-110-025	560-100-025	560-120-025	560-140-025	560-145-025	560-130-025	560-125-025	560-115-025
50ft	560-135-050	560-110-050	560-100-050	560-120-050	560-140-050	560-145-050	560-130-050	560-125-050	560-115-050
100ft	560-135-100	560-110-100	560-100-100	560-120-100	560-140-100	560-145-100	560-130-100	560-125-100	560-115-100

Other lengths are available - please contact your Quiktron representative for complete lengths and availability.



# CAT6 PATCH CABLES

## Cat6 Patch Cables

Quiktron's Cat6 patch cables deliver uncompromising performance and exceptional value. Each cable meets or exceeds Cat6 TIA/EIA-568-B-2.1 standards and are designed to handle bandwidth intensive applications. The pairs in these cables feature a high tolerance twist design that helps maintain the twist spacing up to the termination point. This drastically reduces both impedance and structural return loss (SRL) as compared to standard Cat5e wire and keeps Near-End Crosstalk (NEXT) levels to a minimum.

### Features:

- Connector: 50-micron gold plated RJ45 male to male
- Conductor: 24AWG stranded copper
- Meets or exceeds all Cat6 TIA/EIA-568-B-2.1
- Q-Series Cat6 patch cables are made in the U.S.A. and are available in custom lengths and colors that ship in as little as two business days
- Both Q-Series and Value Series Cat6 patch cables feature a lifetime warranty
- Value Series patch cables available for same day shipping



### Q-Series Cat6 Patch Cables

	Black	Blue	Gray	Green	Orange	Purple	Red	White
Non-Booted	540-135-LLL	540-110-LLL	540-100-LLL	540-120-LLL	540-140-LLL	540-145-LLL	540-130-LLL	540-125-LLL
Booted	541-135-LLL	541-110-LLL	541-100-LLL	541-120-LLL	541-140-LLL	541-145-LLL	541-130-LLL	541-125-LLL
Slimline Booted	541-135-LLL-SLB	541-110-LLL-SLB	541-100-LLL-SLB	541-120-LLL-SLB	541-140-LLL-SLB	541-145-LLL-SLB	541-130-LLL-SLB	541-125-LLL-SLB
Crossover	542-135-LLL	542-110-LLL	542-100-LLL	542-120-LLL	542-140-LLL	542-145-LLL	542-130-LLL	542-125-LLL
Shielded	630-135-LLL	630-110-LLL	630-100-LLL	630-120-LLL	630-140-LLL	630-145-LLL	630-130-LLL	630-125-LLL
Solid Wire, Plenum rated	543-135-LLL	543-110-LLL	543-100-LLL	543-120-LLL	543-140-LLL	543-145-LLL	543-130-LLL	543-125-LLL

LLL – Length can be customized to meet your specifications. When ordering cables please specify length in feet or meters.

### Value Series Cat6 Patch Cables – Shielded Booted

	Black	Blue	Gray	Green	Orange	Red
3ft	576-S35-003	576-S10-003	576-S00-003	576-S20-003	576-S40-003	576-S30-003
5ft	576-S35-005	576-S10-005	576-S00-005	576-S20-005	576-S40-005	576-S30-005
7ft	576-S35-007	576-S10-007	576-S00-007	576-S20-007	576-S40-007	576-S30-007
10ft	576-S35-010	576-S10-010	576-S00-010	576-S20-010	576-S40-010	576-S30-010
14ft	576-S35-014	576-S10-014	576-S00-014	576-S20-014	576-S40-014	576-S30-014
25ft	576-S35-025	576-S10-025	576-S00-025	576-S20-025	576-S40-025	576-S30-025
35ft	576-S35-035	576-S10-035	576-S00-035	576-S20-035	576-S40-035	576-S30-035

### Value Series Cat6 Patch Cables – Booted

	Black	Blue	Gray	Green	Orange	Purple	Red	White	Yellow
1ft	576-135-001	576-110-001	576-100-001	576-120-001	576-140-001	576-145-001	576-130-001	576-125-001	576-115-001
3ft	576-135-003	576-110-003	576-100-003	576-120-003	576-140-003	576-145-003	576-130-003	576-125-003	576-115-003
5ft	576-135-005	576-110-005	576-100-005	576-120-005	576-140-005	576-145-005	576-130-005	576-125-005	576-115-005
7ft	576-135-007	576-110-007	576-100-007	576-120-007	576-140-007	576-145-007	576-130-007	576-125-007	576-115-007
10ft	576-135-010	576-110-010	576-100-010	576-120-010	576-140-010	576-145-010	576-130-010	576-125-010	576-115-010
14ft	576-135-014	576-110-014	576-100-014	576-120-014	576-140-014	576-145-014	576-130-014	576-125-014	576-115-014
25ft	576-135-025	576-110-025	576-100-025	576-120-025	576-140-025	576-145-025	576-130-025	576-125-025	576-115-025
50ft	576-135-050	576-110-050	576-100-050	576-120-050	576-140-050	576-145-050	576-130-050	576-125-050	576-115-050

### Value Series Cat6 Patch Cables – Non-Booted

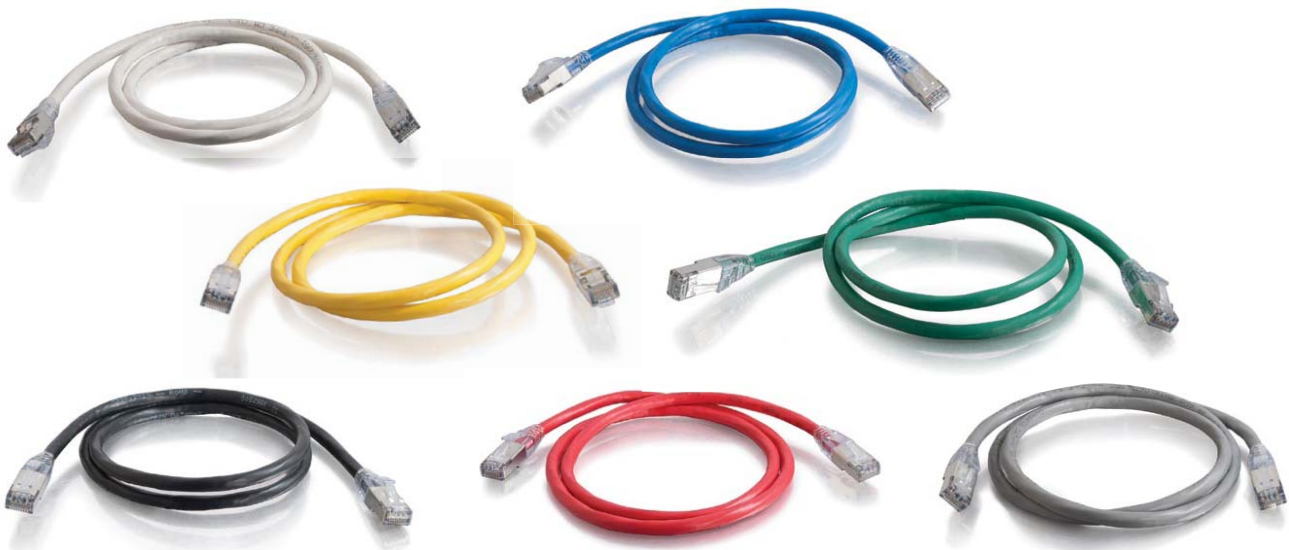
	Black	Blue	Gray	Green	Orange	Purple	Red	White	Yellow
1ft	566-135-001	566-110-001	566-100-001	566-120-001	566-140-001	566-145-001	566-130-001	566-125-001	566-115-001
3ft	566-135-003	566-110-003	566-100-003	566-120-003	566-140-003	566-145-003	566-130-003	566-125-003	566-115-003
5ft	566-135-005	566-110-005	566-100-005	566-120-005	566-140-005	566-145-005	566-130-005	566-125-005	566-115-005
7ft	566-135-007	566-110-007	566-100-007	566-120-007	566-140-007	566-145-007	566-130-007	566-125-007	566-115-007
10ft	566-135-010	566-110-010	566-100-010	566-120-010	566-140-010	566-145-010	566-130-010	566-125-010	566-115-010
14ft	566-135-014	566-110-014	566-100-014	566-120-014	566-140-014	566-145-014	566-130-014	566-125-014	566-115-014
25ft	566-135-025	566-110-025	566-100-025	566-120-025	566-140-025	566-145-025	566-130-025	566-125-025	566-115-025
50ft	566-135-050	566-110-050	566-100-050	566-120-050	566-140-050	566-145-050	566-130-050	566-125-050	566-115-050

## Cat6a Network Cables

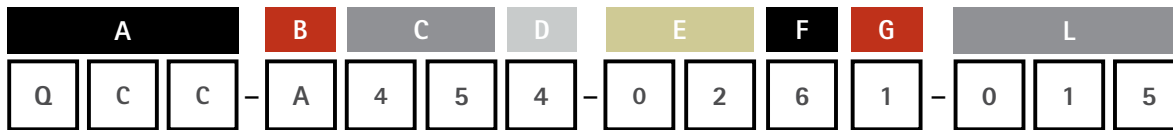
Quiktron's Cat6a network cables enable 10 gigabit data transmission over a twisted pair copper cable, allowing connection distances up to 100 meters. The Cat6a draft extends the Cat6 electrical specifications from 250MHz to 500MHz. It also proposes a new measurement for Power-Sum Alien Crosstalk to 500MHz.

### Features:

- Backwards compatible with existing category standards
- Supports 10Gbit/s data rates up to a maximum distance of 100 meters
- Supports IEEE 802.3af and is DTE power compliant
- Compatible with T568A and T568B wiring
- Provides NEXT performance beyond 600MHz
- Fluke DTX tested to meet or exceed ANSI/TIA 568C.2 Category 6a Channel limits



## Part Number Generator



**Example:** QCC-A454-0261-015 = Q-Series Category Cable, Category 6a, RJ45-Blunt, 4 Pair, 568B/568B, CMG SCTP, Blue, 15 Feet

**A**  
3 Digit Series:  
QCC Q-Series Category Cables

**B**  
Category:  
A Category 6a

**C**  
Connectors:  
40 RJ45-Blunt  
45 RJ45-RJ45

**D**  
Pairs:  
4 4 pair

**E**  
Pinout:  
01 568A/568B  
02 568B/568B

**F**  
Cable Type:  
6 CMG SCTP

**G**  
Cable Color:  
1 Blue      6 White  
2 Orange    7 Red  
3 Green     8 Black  
5 Gray      9 Yellow

**L**  
Length in Feet: