

## SMS-CTL

The Soft dB's SMS-CTL is a DSP-based system that provides unique adjustment functions and ensures the generation of the optimum masking sound regardless of the characteristics of the room.

**Automatic Equalization Process:** Adjusts automatically the masking spectrum for the specific architectural characteristics of the building. The adjustment is quick and precise.

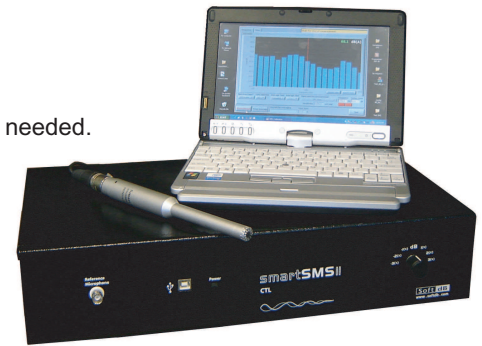
**Active Adjustment of the Masking Sound Level:** Continuously measures the ambient noise and automatically adjusts the masking sound level accordingly. It maximizes the privacy in the treated space while preserving the occupants' comfort.

The SMS-CTL is available in 2 or 8 channel versions, and integrates the controller, the noise generators and the equalizers. It combines sound masking, music diffusion and paging systems, all integrated in one convenient rackmount package.



## Features

- Fully adjustable output channels, e.g. 1/3 octave equalizers ( $\pm 0,1$  dB adjustment).
- Auxilliary inputs for music or paging, 1/3 octave band equalizer on each output.
- Up to 8 SMS-CTL units can be networked through a USB if more than 8 channels are needed.
- Inputs for active sound level sensors.
- Programmable phase-in timer (up to 2 months).
- Volume control knob allows easy volume adjustments.
- The DSP processor is controlled from a PC connected through a USB port.
- Includes a UL and FCC certified 110-240VAC - 25 VDC external power supply.
- Optional internal clock for calendar function allows time-based automatic adjustments.



## Automatic Equalization Process Features

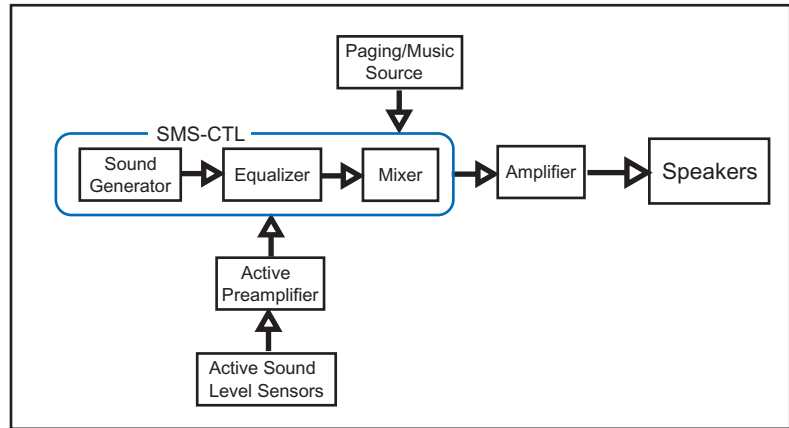
- Integrated 1/3-octave frequency analyzer, real-time measurement of the masking spectrum during the equalization.
- Optional wireless connection between the computer and the SmartSMS allows to easily perform the equalization alone.
- Automatic calculation of the masking sound ensure generation of the target masking sound in the room.
- Different target masking sound spectrums can be applied to different zones.
- A bank of target spectrums is available, spectrum editor function allows to create custom spectrums.
- Equalization can be performed manually, if desired, with a 1/3-octave band equalizer.

## Active Adjustment Features

- Unique active adjustment system which controls the masking volume based on the level of disturbing noise of the room.
- The disturbing noise is measured by sound level sensors installed in the ceiling. Up to 8 sensors per zone.
- The masking sound level is adjusted automatically in real-time.
- Rate of adjustment, high limit and low limit are programmable separately on each output.
- Input mixer allows the combination of any active input with any output channel.

## Applications

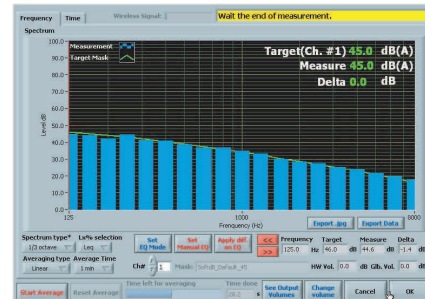
The SMS-CTL Sound Masking System must be used with an external multi-channel amplifier and speakers to generate masking sound. The SMS-CTL has line level outputs that can be connected to any 70V, 25V or 8 Ohm amplifier. All the sound generators, equalizers and mixers are included in one simple rackmount unit.



## Specifications:

Model	Channels	Auxiliary Inputs	Active Inputs
SMS-CTL-2	2	2	2
SMS-CTL-8	8	4	8

AC Input: 100-240 V, 50-60 Hz  
 Power consumption: Maximum: 1 A  
 Frequency response: 100-10,000Hz  
 Distorsion: less than 1%  
 Auxilliary inputs impedance: 80 kOhms  
 Auxilliary inputs maximum voltage:  $\pm 10$  V  
 Active inputs impedance: 80 kOhms  
 Active inputs maximum voltage:  $\pm 2$  V



## Dimensions and Weight

Model	SMS Size (in.) (WxHxD)	Shipping Size (in.) (WxHxD)	SMS Weight (lbs)	Shipping Weight (lbs)
SMS-CTL-2	17 x 3 7/8 x 10 3/4	22 x 9 x 15	10	16
SMS-CTL-8	17 x 3 7/8 x 10 3/4	22 x 9 x 15	10	16

**Soft dB**

1040 Belvédère Avenue, Suite 215  
 Québec (Québec) G1S 3G3 Canada

Tel: (418) 686-0993 Fax: (418) 686-2043  
 Toll free: 1 866 686-0993

[www.softdb.com](http://www.softdb.com)

Notes

smartSMS