

VL522BK-F-FC, VL522M-F-FC IP DOUBLE-SIDED WALL AND CEILING MOUNT COMPACT SPEAKER WITH TEXT

INTRODUCTION

The VL522-F-FC IP Double-Sided Wall and Ceiling Mount Compact Speaker with Text provides highly visible message output and audio paging over an Ethernet network. Audio and Text messages are created and delivered from an Engineered Solutions server. Audio only messages can be created from any Valcom IP Paging source.

SIP (Session Initiation Protocol) compatibility allows flexibility for talkback/intercom connections. An optional call switch can be used to initiate intercom calls from the VL522-F-FC to a Valcom or SIP destination.

SPECIFICATIONS

Features

- SIP compatible
- Easy to read, high visibility
- Font size options
- Seven LED color options
- English and Spanish text support
- Power over Ethernet:
(PoE+) 802.3at compatible
- Speaker output and LED display can be activated together or separately
- Display can operate as a clock or provide other message during idle periods
- Text modes include adjustable-speed scrolling or static display
- Contact Closure input connection for optional Call switch
- Relay output connection for optional equipment
- Bright LED flashers that can be activated based on page priority
- Available in Black matte (VL522BK-F-FC) or Metallic finish (VL522M-F-FC)

Dimensions / Unit Weight

- 22.5" L x 5.4" W (top) / 3.8" W (bottom) x 5.55" H (dimensions without bracket)
(57.2cm L x 13.7cm W (top) / 9.7cm W (bottom) x 14.1cm H)
- 7.0 lb. (3.1kg)
- **Mounting Bracket:**
7.25" W x 8.0" H x 1.4" D

(18.4cm W x 20.3cm H x 3.6cm D)



VL522BK-F-FC



VL522M-F-FC

Nominal Power Requirements

- 802.3at (PoE+) Class 4

Environment

Temperature: 0 to +40° C
Humidity: 0 to 85% non-precipitating

These products are intended for use with a UL Listed power source marked "Class 2" or "LPS" rated 24VDC, or 48VDC (PoE). PoE and all interconnected ITE are intended for intra-building

Precautionary Designations

- **WARNING: To Reduce The Risk Of Fire Or Electric Shock. Do Not Expose This Apparatus To Rain Or Moisture.**
- **AVERTISSEMENT: Afin de réduire les risques d'incendie ou de décharge électrique, évitez d'exposer le système à la pluie ou à l'humidité.**
- **Apparatus shall not be exposed to dripping or splashing and no objects**

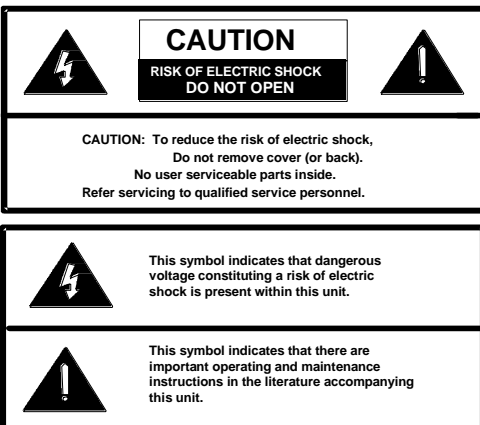
filled with liquids, such as vases, shall be placed on the apparatus.

- L'appareil ne doit pas être exposé à des égouttements et éclaboussures et aucun Objet Rempli de liquide, comme vase, ne doit être placé sur l'appareil.

IMPORTANT SAFETY INFORMATION

CONSIGNES DE SÉCURITÉ IMPORTANTES

1. Read these instructions.
Lisez ces instructions.
2. Keep these instructions.
Conservez ces instructions.
3. Heed all warnings.
Respectez tous les avertissements.
4. Follow all instructions.
Suivez toutes les instructions.
5. Do not use this apparatus near water.
Ne pas utiliser cet appareil près de l'eau.
6. Clean only with dry cloth.
Nettoyer avec un chiffon sec.
7. Do not block any ventilation openings. Install in accordance with the manufacturer's instructions.
Ne pas bloquer les ouvertures de ventilation. Installer conformément aux instructions du fabricant.
8. Do not install near any heat sources such as radiators, heat registers, stoves or other apparatus (including amplifiers) that produce heat.
Ne pas installer à proximité de sources de chaleur telles que radiateurs, registres de chaleur, poêles ou autres appareils (y compris les amplificateurs) produisant de la chaleur.
9. Do not defeat the safety purpose of the polarized or grounding-type plug. A polarized plug has two blades with one wider than the other. A grounding type plug has two blades and a third grounding prong. The wide blade and the third prong are provided for your safety. If the provided plug does not fit into your outlet consult an electrician for replacement of the obsolete outlet.
Ne pas contourner le dispositif de sécurité de la fiche polarisée ou de mise à la terre. Une fiche polarisée possède deux lames dont une plus large que l'autre. Une fiche de terre a deux lames et une troisième broche de mise à la terre. La lame large et la troisième broche sont fournies pour votre sécurité. Si la fiche fournie ne rentre pas dans votre prise, veuillez consulter un électricien pour le remplacement de la prise obsolète.
10. Protect the power cord from being walked on or pinched particularly at plugs, convenience receptacles and the point where they exit from the apparatus.
11. Only use attachments/accessories specified by the manufacturer.
N'utilisez que des fixations / accessoires spécifiés par le fabricant.
12. Use only with the cart, stand, tripod, bracket or table specified by the manufacturer or sold with the apparatus. When a cart is used, use caution when moving the cart/apparatus combination to avoid injury from tip-over.
Utilisez uniquement avec le chariot, stand, trépied, support ou table spécifié par le fabricant ou vendu avec l'appareil. Quand un chariot est utilisé, Soyez prudent lorsque vous déplacez l'ensemble chariot / appareil pour éviter des blessures dues au renversement.
13. Unplug this apparatus during lightning storms or when unused for a long period of time.
Débranchez cet appareil pendant les orages ou lorsqu'il n'est pas utilisé pendant une longue période de temps.
14. Refer all servicing to qualified service personnel. Servicing is required when the apparatus has been damaged in any way. Such as when the power supply cord or plug is damaged, liquid has been spilled, objects have fallen into the apparatus or the apparatus has been exposed to rain or moisture and does not operate normally or has been dropped.
Confiez toute réparation à un personnel qualifié. Une réparation est nécessaire lorsque l'appareil a été endommagé de quelque façon. Par exemple lorsque le cordon d'alimentation ou la fiche est endommagé, du liquide a été renversé, si des objets sont tombés dans l'appareil ou le appareil a été exposé à la pluie ou à l'humidité et ne fonctionne pas normalement ou s'il est tombé.



FCC Information

This equipment has been tested and found to comply with the limits for a Class A digital device, pursuant to Part 15 of the FCC Rules. These limits are designed to provide reasonable protection against harmful interference when the equipment is operated in a commercial environment. This equipment generates, uses and can radiate radio frequency energy and if not installed and used in accordance with the instruction manual, may cause harmful interference to radio communications. Operation of this equipment in a residential area may cause harmful interference in which case the user will be required to correct the interference at one's own expense.

INSTALLATION

Mounting

The VL522-F-FC message display can be mounted to a wall or ceiling as shown in Figures 2, 3A and 3B.

The base must be attached to the main unit before installation. For ease of installation, the bracket is in two pieces. The base bracket attaches to the display, the mounting bracket attaches to the wall or ceiling.

Wall Mount:

The base bracket with the round hole attaches to the end of the display. Feed the ethernet cable through the hole before attaching the base bracket to the display using 4 #8-32 screws (included). The conduit knockout on the base indicates the top side. The mounting bracket with the square cutout attaches to the wall. Attach the mounting bracket to a single or double gang outlet box, or directly to the wall if not using an outlet box. The mounting bracket has additional holes for secure mounting. Use minimum #10 x 2" screws for stud walls, or other appropriate hardware depending on wall type.

With the brackets now attached to the main unit and wall, connect the network to the main unit then slide the base over the wall bracket until the base tabs fit into the matching slots. Secure the brackets together with 4 #8-32 screws (included). The lower screw holes in the bracket attached to the display are elongated to allow up to 3° leveling adjustment. See Figures 2 and 2A.

A #8-32 x 1.00" maximum eye bolt (not included) can be installed on the top of the main unit to allow cable or wire anchoring to the structure, if desired (not depicted).

Ceiling Mount (hard ceiling):

For mounting to a hard ceiling with installed outlet box (Figure 3A), the base bracket with the round hole must be installed on the top of the main unit. Remove the cover plate from the top of the main unit and carefully pull the ethernet cable back through the top. Feed the ethernet cable through the hole in the base, then attach the base to the top of the main unit using 4 #8-32 screws. Attach the other mounting bracket to the ceiling outlet box. Use minimum #10 x 2" screws for stud ceilings, or other appropriate hardware depending on ceiling type.

Additional holes are available in the mounting bracket for support reinforcement. With the brackets now attached to the main unit and ceiling, connect the network to the main unit then slide the base over the mounting bracket until the base tabs fit into the matching slots. Secure the brackets together with 4 #8-32 screws (included). See Figure 3A.

Ceiling Mount (suspended tile ceiling):

For mounting to a suspended ceiling tile (Figure 3B), the recommended method is to use a Valcom ceiling tile bridge support (V-9914M-5). The V-9914M-5 will fit a standard 2' width tile. Remove the cover plate on the top of the main unit and carefully pull the ethernet cable back through the top. A hole in the ceiling tile will need to be made to make the network connection, as well as two holes for the two #8-32 x 2" mounting screws (included). Install the screws, lock washer and flat washer through the bridge and ceiling tile and into the threaded holes on the VL522-F-FC. Tighten the screws securely. For additional support, two #8-32 x 2" eye-bolts (not included) can be substituted for the screws and tied off to the structure above the ceiling tile.

For either ceiling mount option, a plastic cap is provided to cover the hole in the endcap on the side of the display.

CONNECTIONS

Network Connection / Power

The VL522-F-FC has one RJ-45 network connector. The VL522-F-FC is shipped with an ethernet patch cable and coupler extending through the end cap of the display (for wall mount). If mounting on a ceiling, the cable and

coupler should be rerouted through the top of the VL522-F-FC. See instructions in the Mounting section.

Connect a standard patch cable to the VL522-F-FC coupler from an Ethernet switch supporting the Power over Ethernet specification 802.3at (PoE+). If a PoE+ switch is not available, a mid-span injector may be used to supply power to the display, or an optional Valcom 24Vdc power adapter may be connected to the barrel connector on the circuit board. The recommended power supply is a VP-1124D.

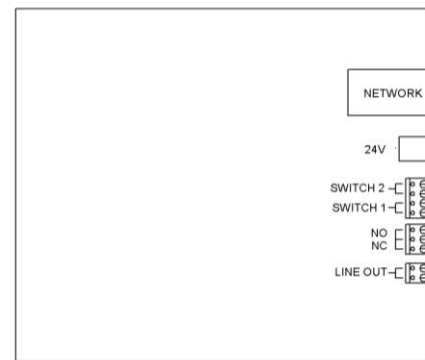


Figure 1. Connections

Call Switch Connection

The VL522-F-FC provides a call switch input via screw terminal connections labeled Switch 1 in Figure 1.

Relay Connection

One relay output is provided through three screw terminals, labeled Normally Open (NO) and Normally Closed (NC). The center screw terminal is common to both NO and NC. The relay contacts are rated 1 amp @ 24Vdc.

Line Out Connection

The Line Out connection provides line level output sufficient to drive up to 40 Valcom self-amplified speakers.

Status / Demo / Reset

A multifunction button is provided to display information, and/or reset the VL522-F-FC configuration. The button is located behind a pinhole in the case of the VL522-F-FC and can be depressed using a small diameter object, such as a toothpick. The button provides different results depending on how long the button remains depressed.

Status Mode

Press the button for approximately 1 second and release and the Status display will show the current IP Address, Power Source status and the last four digits of the MAC address.

Demo Mode

While the Status display is active, pressing the button again will enable Demo Mode. In this mode, the VL522-F-FC will display a scrolling sample message and the flashers will flash. Demo Mode will display for about 30 seconds then the VL522-F-FC returns to normal operation.

Reset Modes

Pressing the button continuously for greater than 10 seconds, but less than 20 seconds, will perform a soft reset on the VL522-F-FC. The IP address will be reset to the factory default setting. Other configuration items will not be affected.

Pressing the button continuously for greater than 20 seconds will perform a hard reset on the VL522-F-FC. All configuration items (including the password) will be reset to factory default settings.

Setup

Information specific to your application will need to be programmed into the VL522-F-FC using a computer. The PC used for the programming should be connected to the same subnet as the display. Setup will be done using the IP Solutions Setup Tool. Download the latest version of the free IP Solutions Setup Tool from the Valcom website at www.valcom.com/vipsetuptool.

TECHNICAL ASSISTANCE

Assistance is available from the factory when problems are encountered. Call (540) 563-2000 and press 1 for Technical Support or visit our website at <http://www.valcom.com>

Valcom, Inc. equipment is not field repairable. Valcom maintains service facilities in Roanoke, VA.

Should repairs be necessary, attach a tag to the unit clearly stating company name, address, phone number, contact person, and the nature of the problem.

Send the unit to:

**Valcom, Inc.
Repair and Return Dept.
5614 Hollins Road
Roanoke, VA 24019-5056**

WARRANTY

Warranty information may be found on our website at www.valcom.com/warranty.

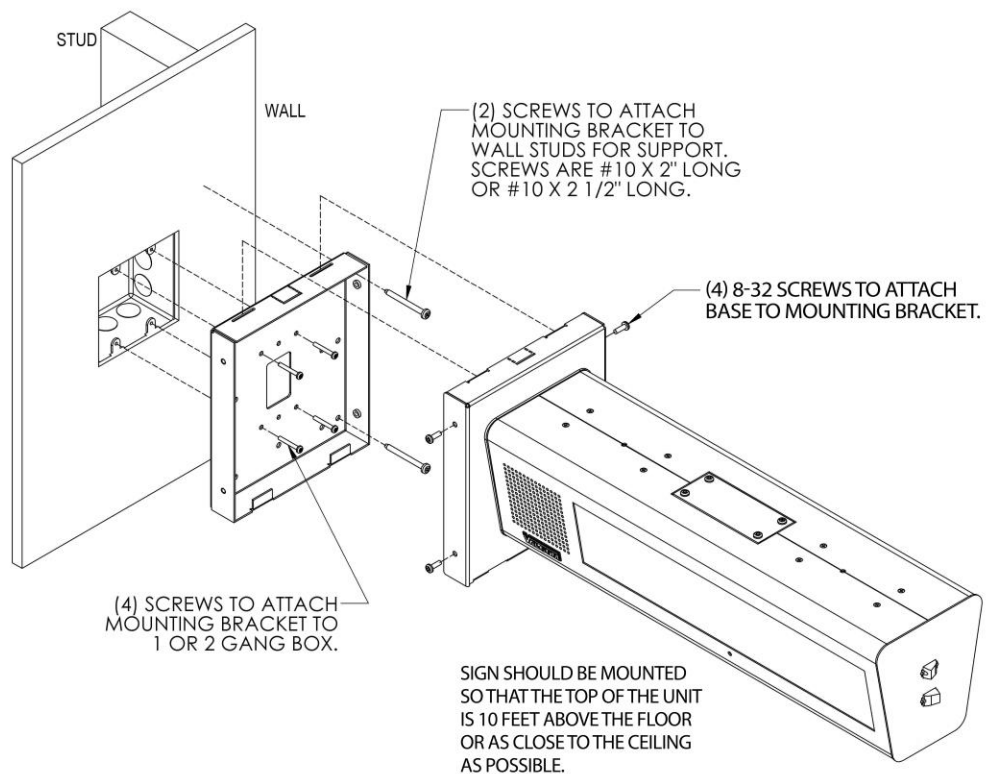
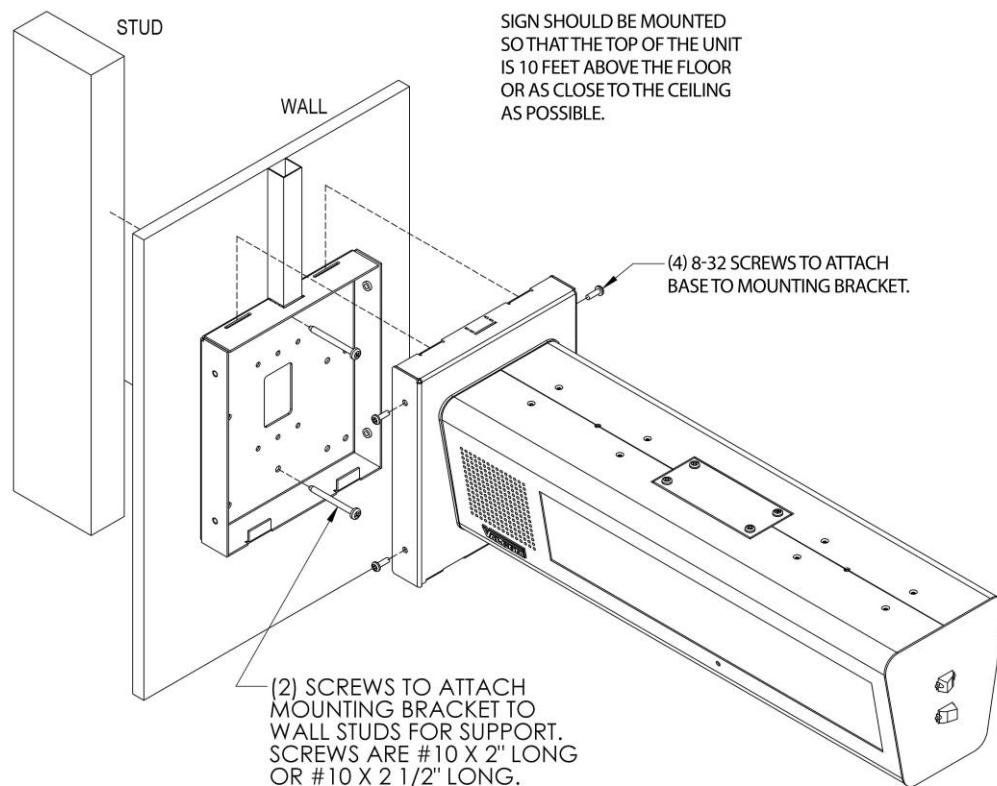


Figure 2. Wall Mount

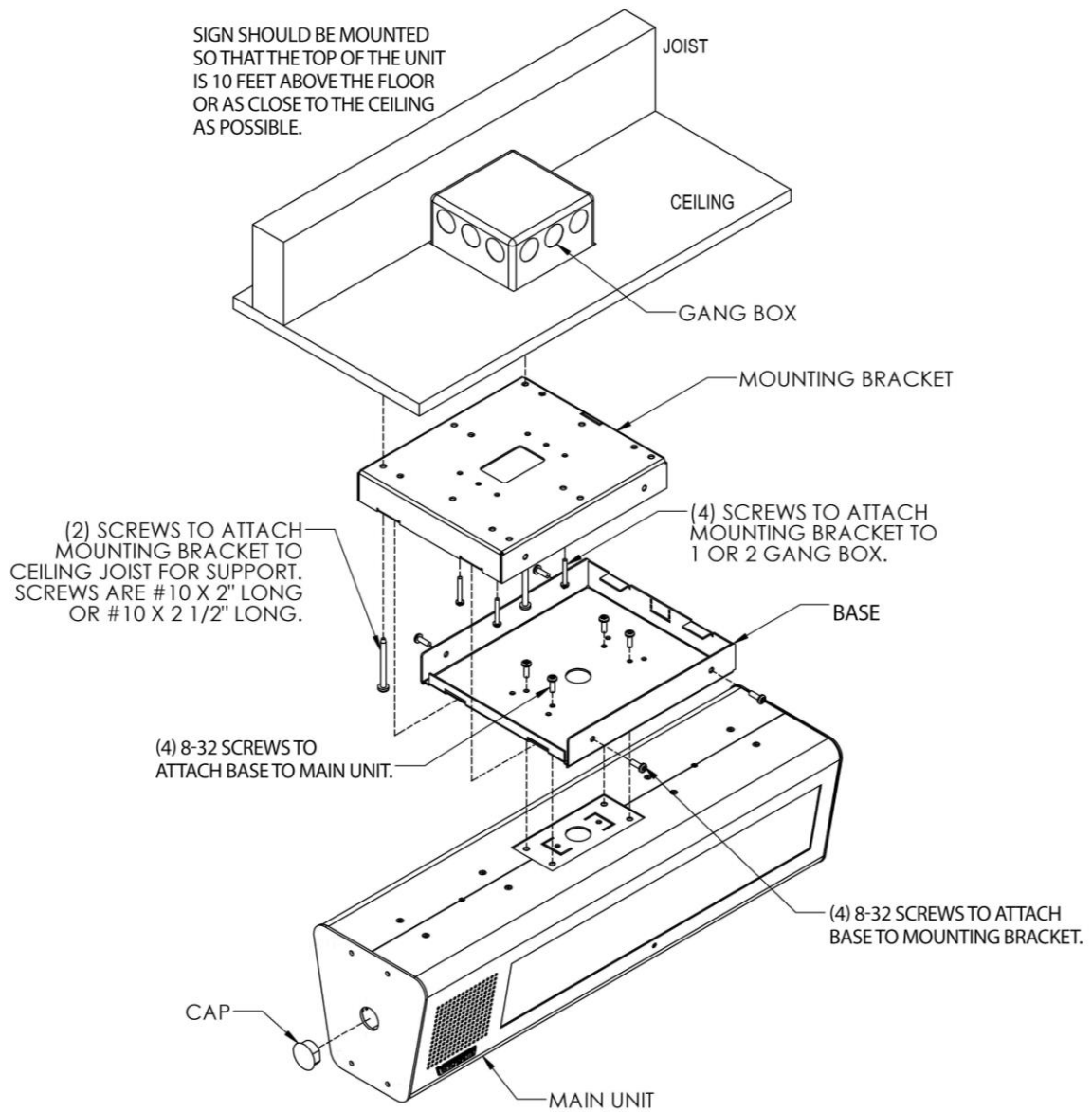


Figure 3A. Ceiling Mount

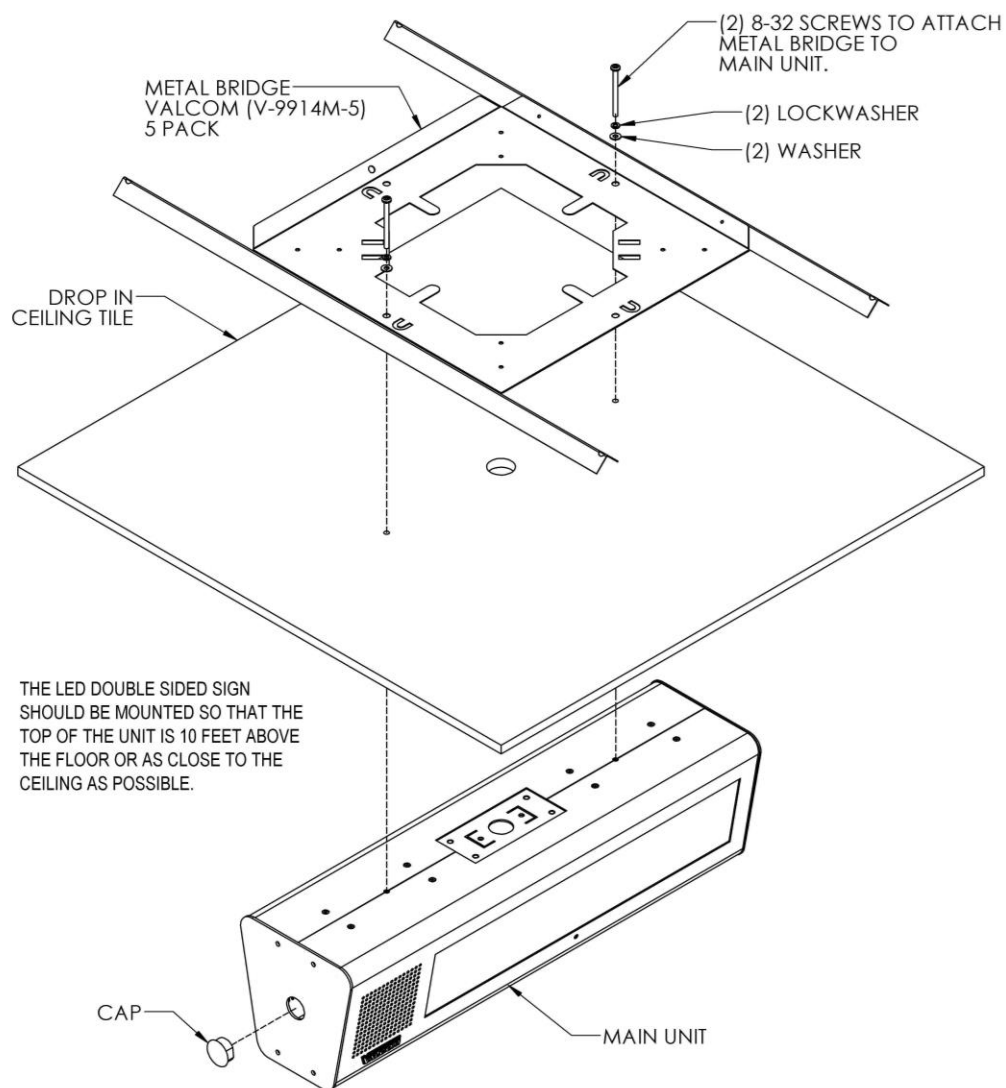


Figure 3B. Ceiling Mount