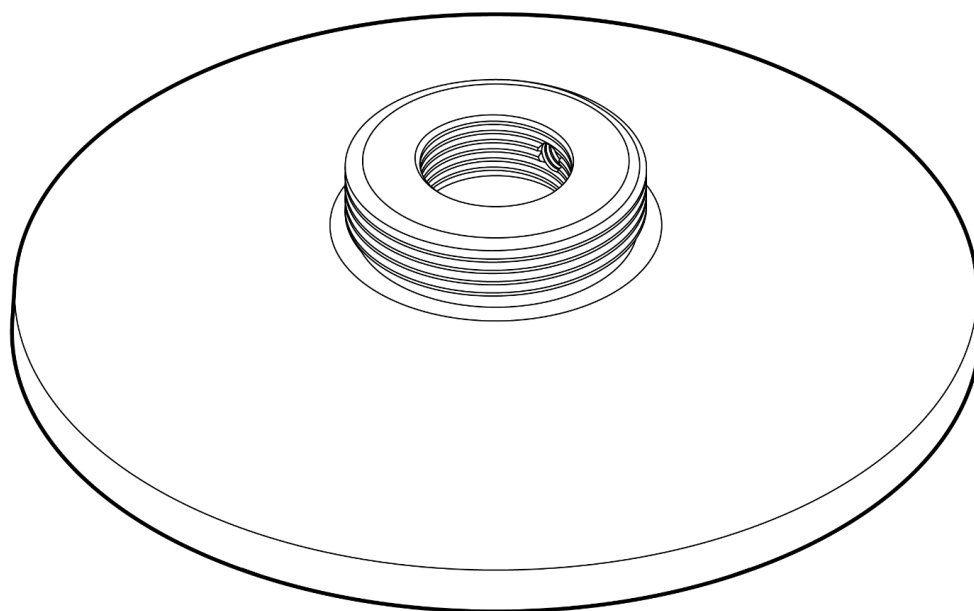


# **ACC-MNT-PEND-1** Standard Pendant Cap



## Document Details

### Version

**V1.2** 20250508

*(V1.0 published 20241004)*

### Firmware

Firmware version can be verified on Verkada Command  
[command.verkada.com](https://command.verkada.com).

### Product Models

This install guide pertains to models ACC-MNT-PEND-1.

© Copyright 2024 Verkada Inc. All rights reserved.

Verkada and the Verkada logo are registered trademarks or service marks of Verkada Inc. ("Verkada"). All other trademarks are the property of their respective owners.

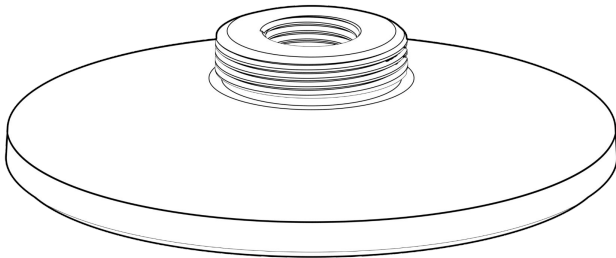
Verkada may make changes to this document at any time without notice. The information presented herein may be inaccurate or outdated, and Verkada is under no obligation to maintain it. ALL INFORMATION IS PROVIDED "AS-IS" AND WITHOUT ANY WARRANTIES, IMPLIED, EXPRESS, OR OTHERWISE. VERKADA DISCLAIMS LIABILITY FOR ALL DAMAGES, INCLUDING WITHOUT LIMITATION ANY DIRECT, INDIRECT, SPECIAL, INCIDENTAL, PUNITIVE, OR CONSEQUENTIAL DAMAGES, ARISING OUT OF USE OF THIS DOCUMENT.

Any intellectual property rights relating to Verkada products are and shall remain Verkada's exclusive property. Use of any Verkada product is subject to Verkada's end user agreement or other executed agreement with Verkada. No license, either expressed or implied, to use or distribute any Verkada product is granted under this document.

This document may not be sold, resold, licensed or sublicensed and may not be transferred without Verkada's prior written consent. No part of this document may be reproduced in whole or in part without the express written consent of Verkada.



## What's in the box



**Standard Pendant Cap**



**Hex Key**

Size: 4mm



**M4 Thumb Screws (2 pcs)**

Length: 13mm Drive: T10 Security Torx



**M6 Set Screw**

Length: 6mm Drive: T10 Security Torx  
(Attached to product)



**M4 Machine Screws (3 pcs)**

Length: 10mm Drive: #2 Phillips

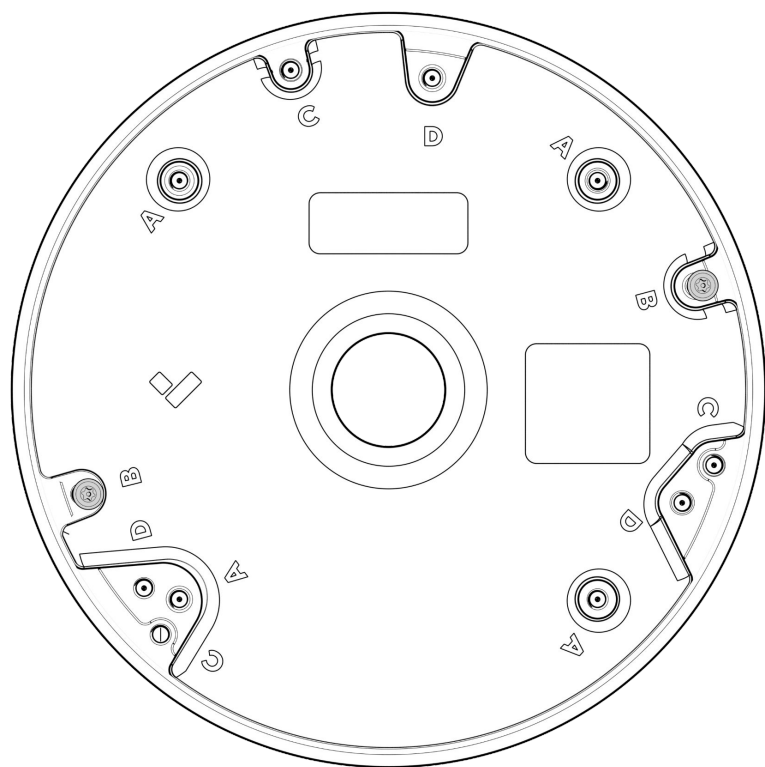
## What you'll need

- A compatible Verkada product
- T10 Torx Security Screwdriver
- A #2 Phillips screwdriver

## Compatible Products

For a list of compatible products, please visit:  
<https://docs.verkada.com/docs/accessories-overview.pdf>

## Overview



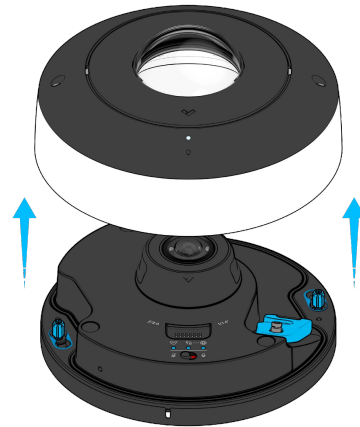
### Pendant Cap Hole Patterns

- A 4" Junction Box
- B CF83-E, CDX3-E, CDX3
- C CDX2-E, CF81-E, CH52-E
- D CDX2

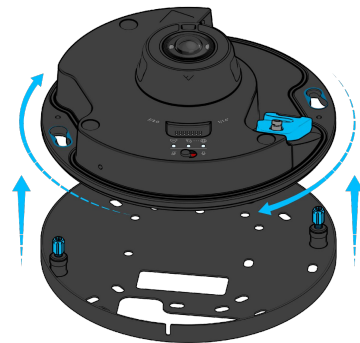
## Installation

### Prepare the Camera

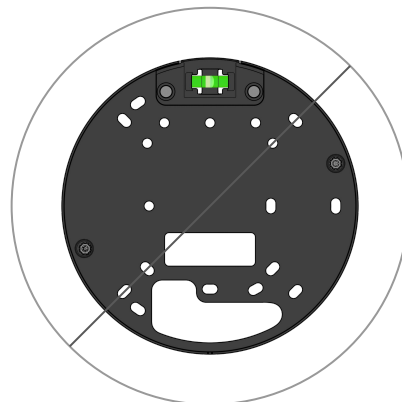
Use the provided T10 Torx Security Screwdriver to loosen the screws and lift the cover of the camera.



To remove the mount plate, loosen the mount plate screws with a T10 Torx Security Screwdriver and twist the camera counter clockwise. Lift the camera vertically off the mount plate and set aside.



**Note:** You will not use the camera mount plate when installing the camera onto the Standard Pendant Cap.



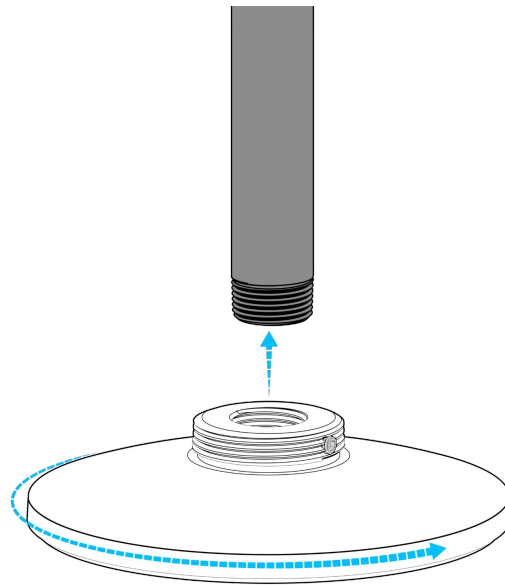
## Installation

### Mounting to a 3/4" Conduit Drop Pipe 1/2

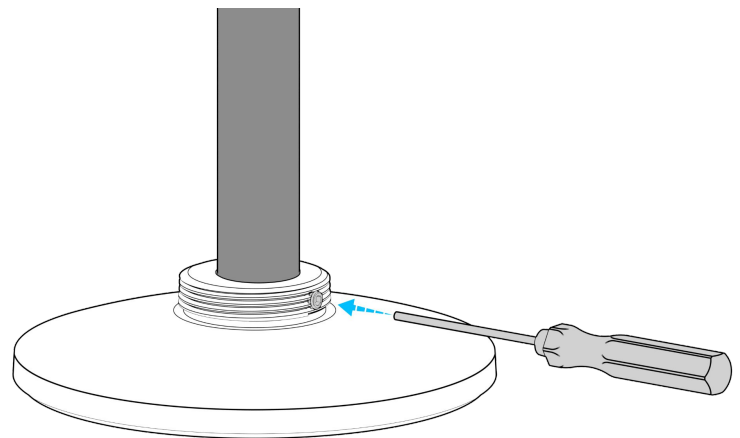
Using the T10 Security Screwdriver, provided with the Verkada Camera, loosen the M6 set screw on the Standard Pendant Cap.

Pull the cable through the conduit drop pipe and the Pendant Cap.

Screw the Standard Pendant Cap onto the conduit drop pipe, using the internal 3/4" NPT threads.



Secure it by tightening the M6 set screw, using the T10 Security Screwdriver.



## Installation

### Mounting to a 3/4" Conduit Drop Pipe 2/2

Retrieve the camera.

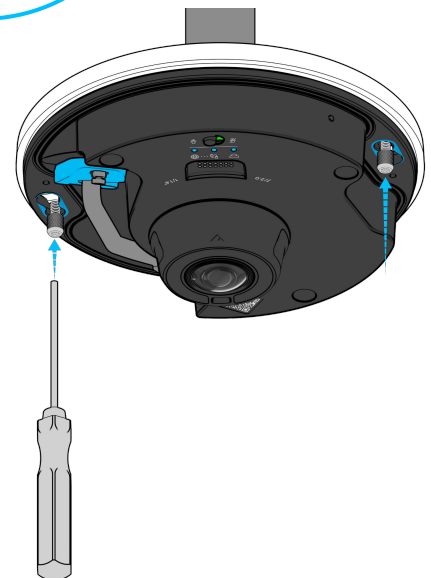
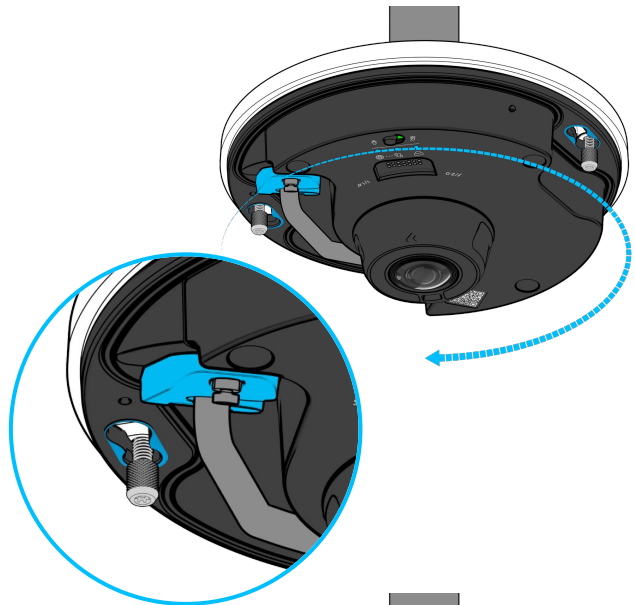
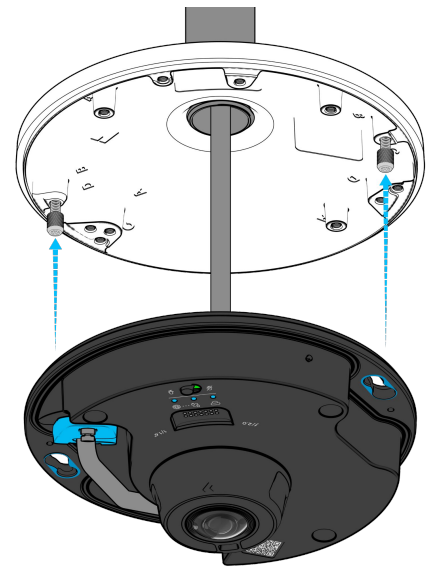
Refer to the *Preparation and Mounting* sections of the camera install guide for accurate cable installation.

Align the the camera's blue mounting slots with the thumb screws on the Standard Pendant Cap.

With thumb screws fully inserted, rotate the camera clockwise.

Tighten the thumb screws using the T10 Security Screwdriver.

**Note:** If mounting a CDX2, CDX2-E, CF81-E, use the thumbscrews from their respective mount plate, and the appropriate hole pattern, to secure the camera to the accessory.



## Installation

### Mounting to an Arm Mount 1/2

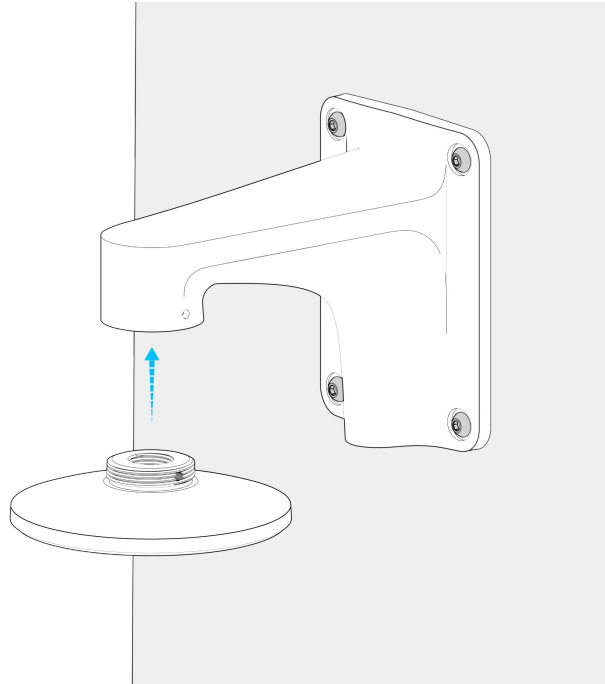
#### Compatible Arm Mounts:

ACC-MNT-ARM-1 and ACC-MNT-XLARM-1.

Pull the cable through the Arm Mount and the Standard Pendant Cap.

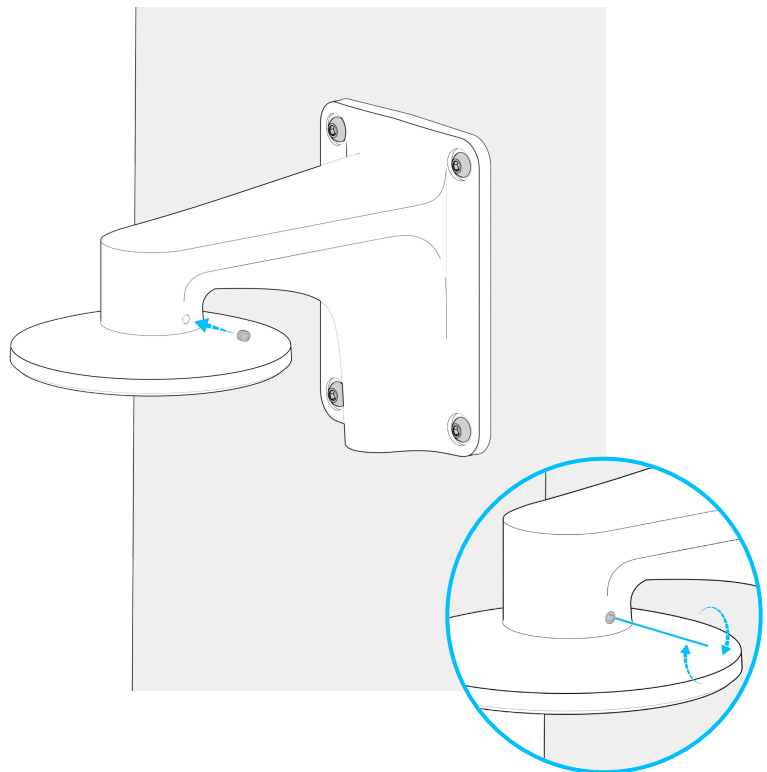
Using the T10 Security Screwdriver, provided with the Verkada Camera, remove the M6 set screw on the Standard Pendant Cap.

Using the external 1.5" NPT threads, screw the Standard Pendant Cap onto the Arm Mount.



Tighten the set screw provided with the Arm Mount, using the Hex Key. **Do not use the set screw from the Standard Pendant Cap.**

**Do not overtighten the set screw, as it can deform the threads of the Standard Pendant Cap.**





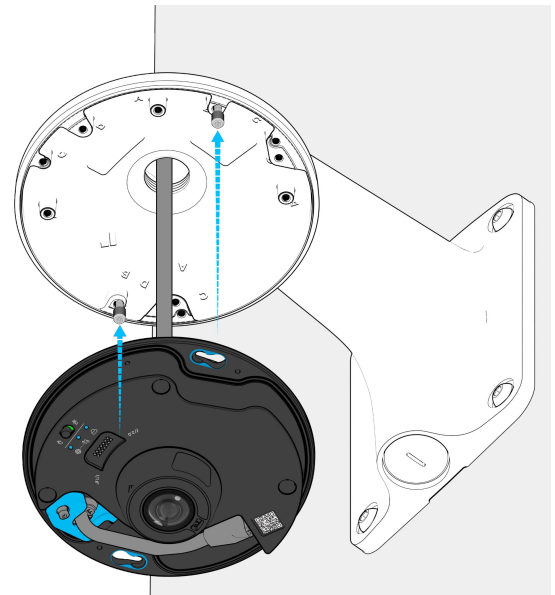
## Installation

### Mounting to an Arm Mount 2/2

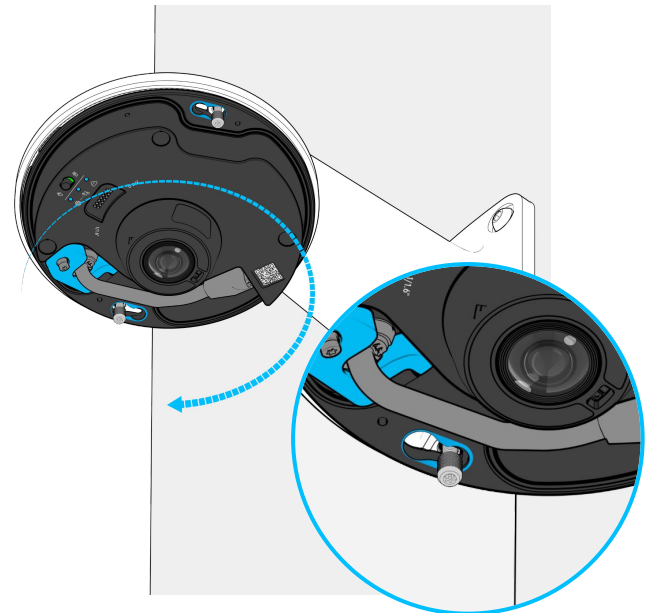
Retrieve the camera.

Refer to the *Preparation and Mounting* sections of the camera install guide for accurate cable installation.

Align the the camera's blue mounting slots with the thumb screws on the Standard Pendant Cap.

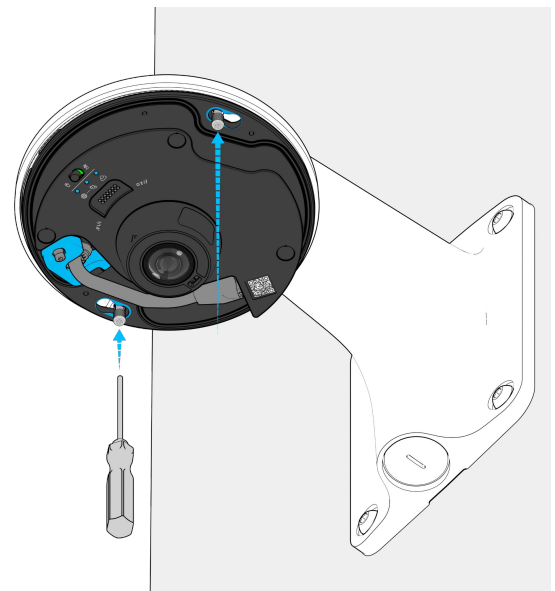


With thumbscrews fully inserted, rotate the camera clockwise.



Tighten the thumbscrews using the T10 Security Screwdriver.

**Note:** If mounting a CDX2, CDX2-E, CF81-E, use the thumbscrews from their respective mount plate, and the appropriate hole pattern, to secure the camera to the accessory.



Appendix

## **Support**

Thank you for purchasing this Verkada product. If for any reason you're experiencing issues or need assistance, please contact our 24/7 Technical Support Team immediately.

Sincerely,  
The Verkada Team  
[verkada.com/support](https://verkada.com/support)

