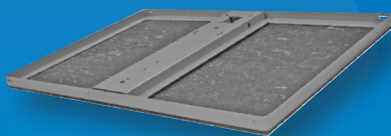


Non-Penetrating Mounts

Winegard's non-penetrating roof mounts solve the problems associated with flat roof installations. They are designed for mounting smaller residential satellite antennas and other small antennas to flat roofs, patios, or other flat surfaces without having to penetrate the mounting surface.

- Great for when a non-permanent installation is required or one that may be moved to other sites.
- Accommodate direct mounting of 29 inch and smaller antennas. Frames and post kits (sold separately) may be combined to support antennas up to 1 meter in size.
- Base frames are manufactured from 1.25 x 1.25 x .100" galvanized steel for superior corrosion protection.
- Posts (sold separately) are galvanized steel with sturdy aluminum braces.
- Base frames and posts have a 7-step thermoset powder coat finish.
- All components Made in USA and ship UPS.

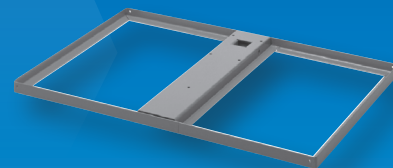
NP6000M replacement for DS-5047



NON-PENETRATING MOUNT WITH MAT

Base frame for non-penetrating roof mount. Designed for 46 and 60 cm antennas. This single base frame covers approximately six square feet of roof space. Includes mat which provides protective barrier between bricks and mounting surface.

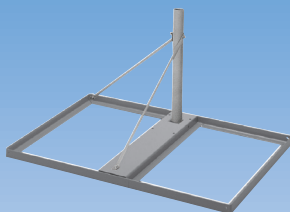
NP-6000 replacement for DS-5046



NON-PENETRATING MOUNT NO MAT

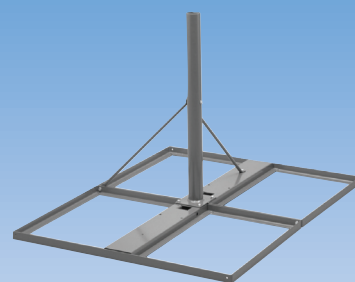
Base frame for non-penetrating roof mount. Designed for 46 and 60 cm antennas. Single base frame covers approximately six square feet of roof space.

DS-5146 POST KIT FOR USE WITH ONE BASE FRAME



Post kit for non-penetrating roof mount. This model will support antennas up to 76 cm when used with the single base frame, NP6000M/NP-6000. Post kit includes Dia 1.66 pole and braces; *base frame not included*. Mount covers approximately six square feet of roof space.

DS-5001 POST KIT FOR USE WITH TWO BASE FRAMES



Post kit for non-penetrating roof mount. This post kit is designed to support 1 meter antennas when used with two base frames, NP6000M/NP-6000. Mount covers approximately 12 square feet of roof space. Post kit includes Dia 2.375 pole and braces; *base frame not included*.



WINEGARD®

